



212 - 1830 Walkers Line, Burlington

Low-Maintenance Living At Burlington's Woodbridge Condominiums

This lovely two bedroom, two bathroom Windsor model offers 1013 square feet of bright, comfortable living space (plus a large balcony) - one of the largest floor plans in the building!

The Windsor is a corner unit with an open concept floor plan that allows for flexible use of the space.

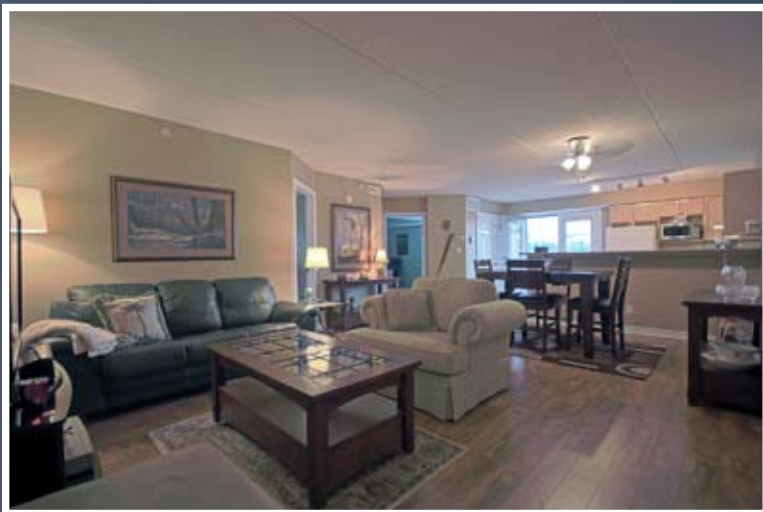
Located near Walker's Line and Upper Middle Road, the convenient location provides for many area amenities and shopping options as well as easy access for commuting.

Gas heating and the reasonable condo fees help make these buildings one of the more affordable options in Burlington.



First Impressions

This roomy, open concept Windsor model offers a welcoming first impression. True pride of ownership can be felt in the modern décor and immaculate condition of this home...



Living - Dining Room (13'0" (15'2") by 20'2")

Open, flexible living and dining areas offer a flexible space to be set up to best suit your lifestyle. Quality laminate flooring and neutral colours. Ceiling fan over dining area.



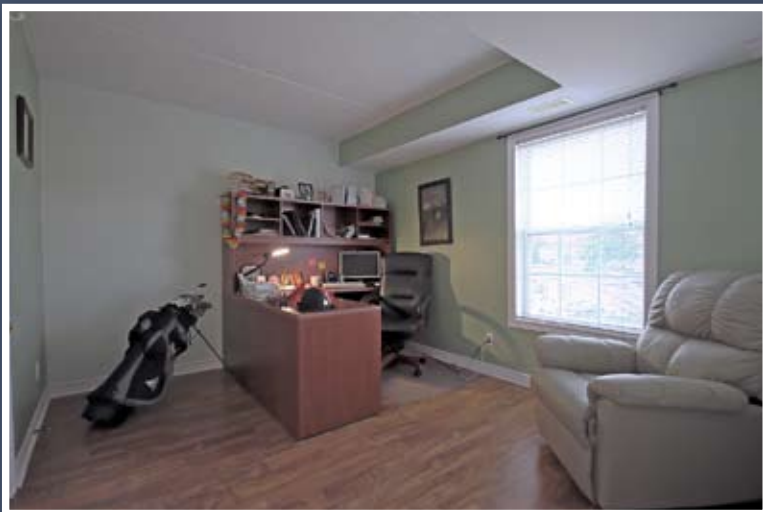
Dining Area

The dining area is open to the kitchen and allows for a large table plus seating along the breakfast bar..



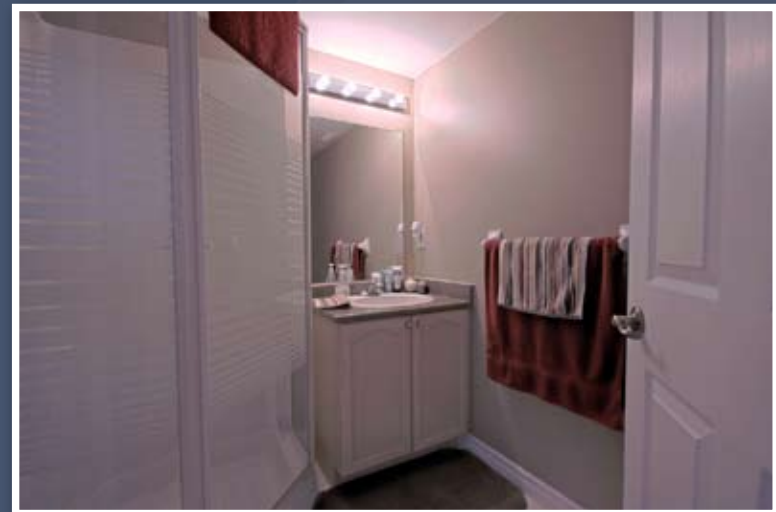
Kitchen (14'3" by 9'0")

Plenty of cabinetry, breakfast bar and large double sink. Durable vinyl flooring and walk-out to balcony.



Second Bedroom (11'11" by 9'8")

Lots of natural light through large window. Quality laminate flooring and closet.



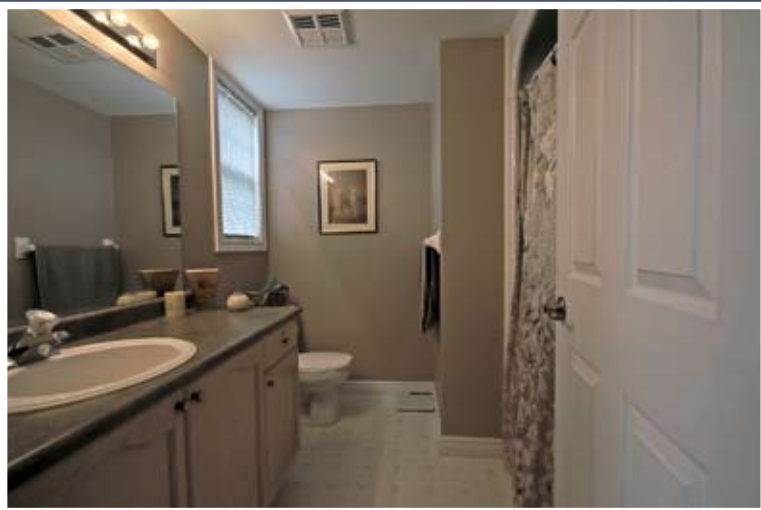
Main Bathroom

Bright breakfast area open to kitchen with upgraded light fixture, custom draperies and ceramic flooring.



Master Bedroom (13'10" (16'4") by 11'10")

Plenty of space in the large master bedroom with double closet, en suite. Generously sized window lets in amply natural light. Quality broadloom flooring and custom window treatments.



En Suite

Full en suite with large vanity, durable vinyl flooring and good-sized window. Pleasing neutral décor.



Balcony

Added outdoor living space, the balcony offers a great place to stretch out and take in some fresh air.

Features and Highlights

- 2 Bedrooms and 2 Bathrooms
- Underground Parking
- Storage Locker
- In Suite Laundry Room
- Large Balcony Off Kitchen
- Quality Broadloom, Vinyl and Laminate Flooring
- Large Kitchen with Breakfast Bar
- Full En Suite
- Double Closets in Master
- Central Air Conditioning
- Controlled Entry
- Party Room
- Fitness Room
- Pet Friendly Building

Inclusions: Fridge, Stove, Dishwasher, Stacked Washer/Dryer, All Electric Light Fixtures, All Window Coverings

Property Details

Bedrooms: 2

Bathrooms: 2

Approximate Size: 1013 square feet (plus balcony)

Condo Fees: \$290 per month

Includes: Building Maintenance and Insurance, Water, Parking

Taxes: \$2,022/2011

Possession: Flexible



All information herein is deemed accurate, but not warranted. Room measurements as per builder's floor plan.

James Neil

sales representative

RE/MAX Aboutowne Realty Corp., Brokerage
418-2 North Service Road East
Oakville, ON L6H 5R2

905.842.7000 (office)
905.399.7253 (direct)
james@jamesneil.com
www.jamesneil.com

