

1769 Hobson Drive, Burlington



Bright End Unit Townhome for Lease

AT A GLANCE

Bedrooms: 3 Bedrooms
Bathrooms: 2 1/2 Bathrooms
Parking: Single Garage
Central Air: Yes
Home Size: 1435 Square Feet
Lot Size: 20 by 98 feet

Possession: Mid-August

This three bedroom townhome in east Burlington offers a 1435 square foot floor plan that includes 3 bathrooms and a handy computer niche.

Bright, neutral and fresh with durable laminate flooring in living, dining and bedrooms.

Ideal for commuters with GO Train close by and easy access to the QEW and 403. Not far from highways 407 and 401.



FEATURES:

- 3 good-sized bedrooms
- 2 full bathrooms plus a 2-piece
- computer niche on second level
- laminate flooring in living, dining, and bedrooms
- ceramic tiles elsewhere (except stairs and second level hall)
- single attached garage
- walkout to low maintenance backyard
- single attached garage with inside entry
- stainless steel fridge and stove
- security system (not monitored)

INCLUSIONS:

- All Appliances (Fridge, Stove, Dishwasher, Washer, Dryer), All Blinds, All Electric Light Fixtures

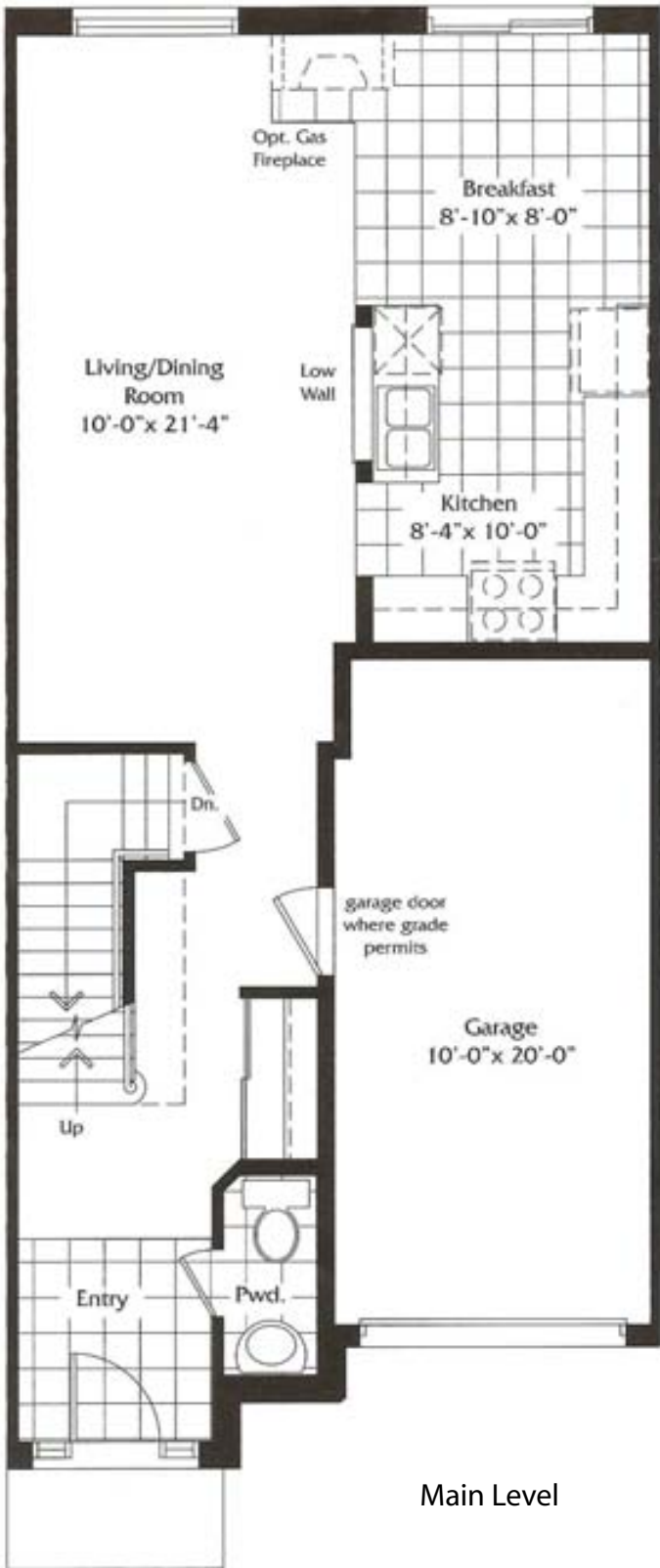
EXCLUSIONS:

- All Draperies, Hot Water Heater (Rental), Owners Chattels, Storage Areas in Basement

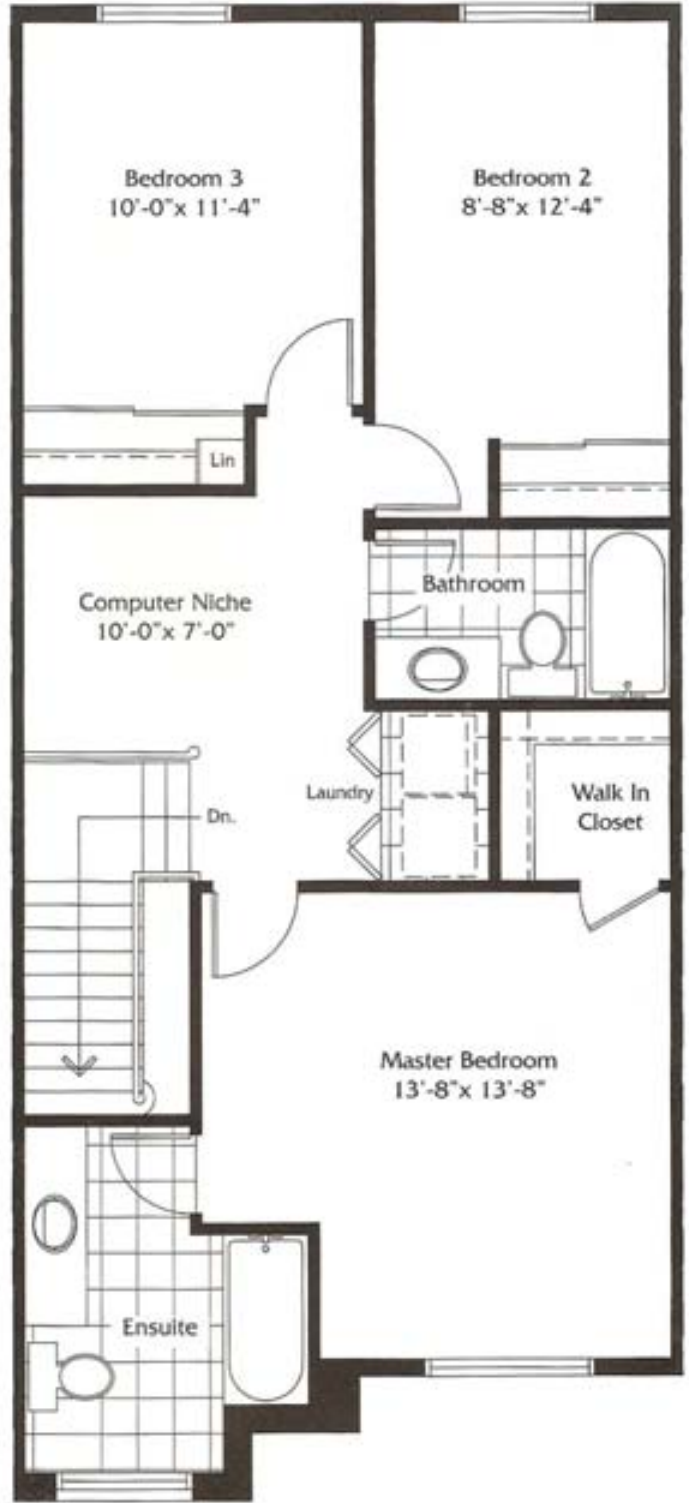


1769 Hobson Drive





Main Level



Second Level

Ashbury "A1" - 1435 Square Feet