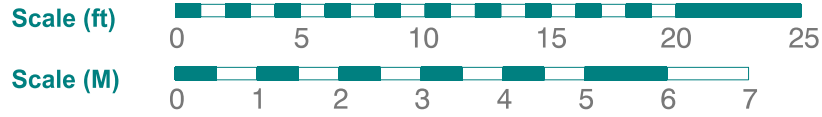
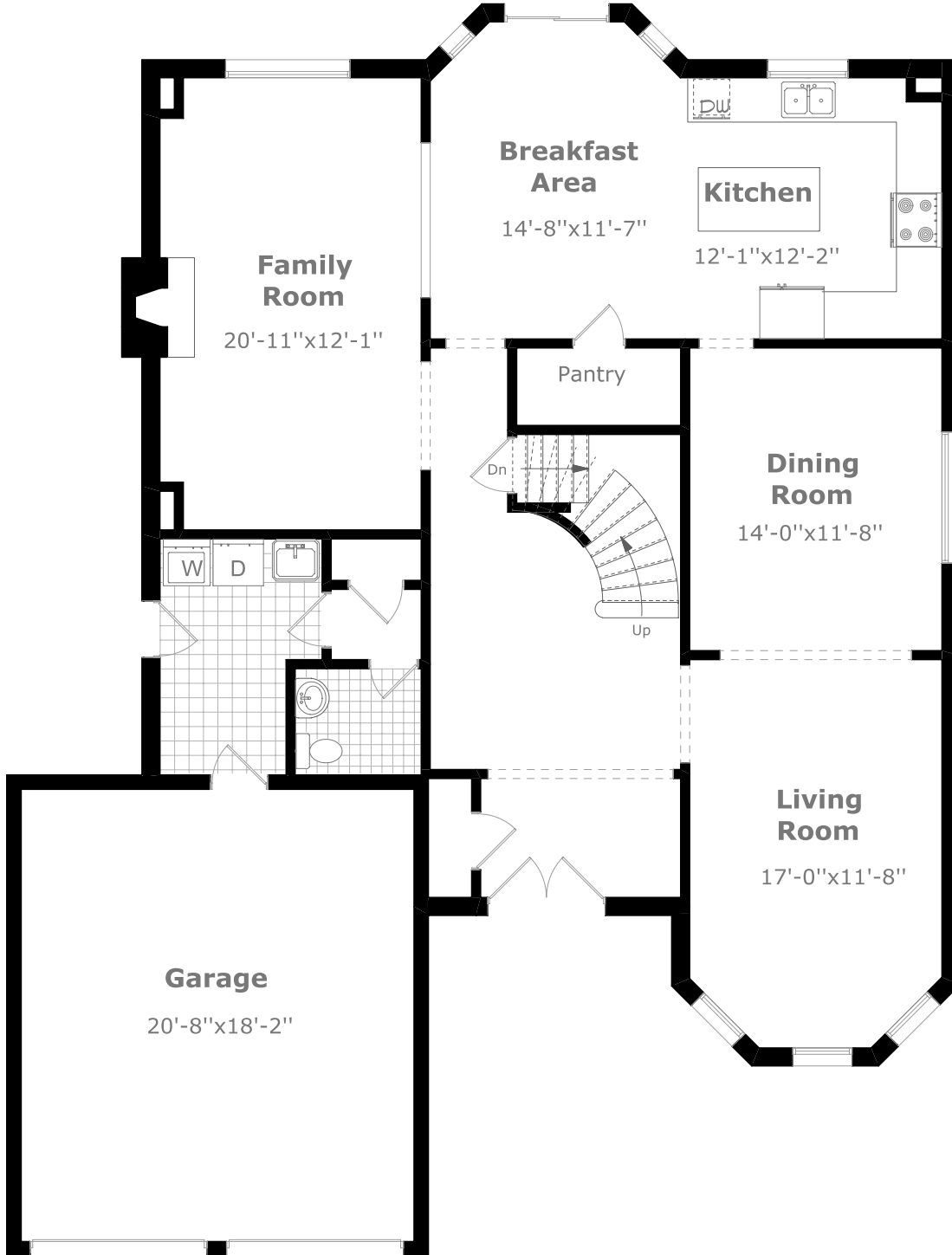


503 Blenheim Crescent



September 2008



Main Floor Plan

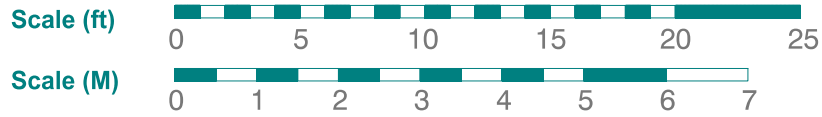
1,527.7 sq. ft.+

421.2 sq. ft. (Garage)

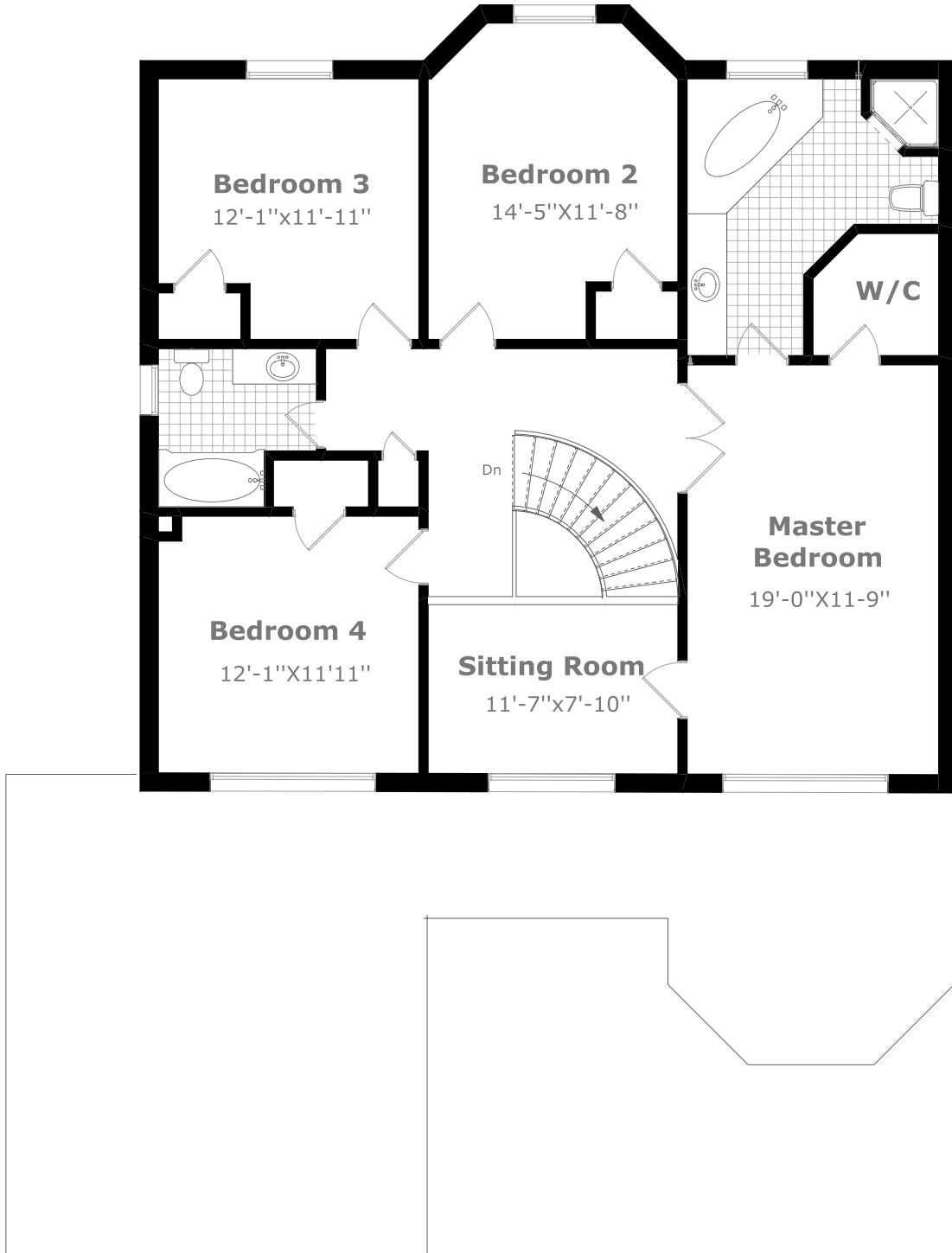


Measurements may not be 100% accurate. Floor Plans provided for illustrative purposes only. Room sizes not used to calculate area.

503 Blenheim Crescent



September 2008



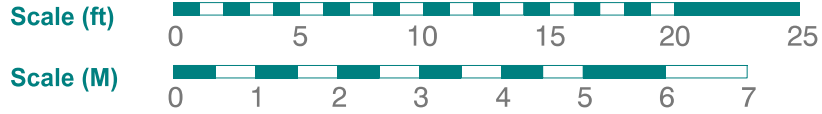
2nd Floor Plan

1,306.2 sq. ft.



Measurements may not be 100% accurate. Floor Plans provided for illustrative purposes only. Room sizes not used to calculate area.

503 Blenheim Crescent



September 2008



Basement Plan

1,638.4 sq. ft.



Measurements may not be 100% accurate. Floor Plans provided for illustrative purposes only. Room sizes not used to calculate area.